

GRIP for Windows

*A Relational Intelligence Link
Analysis Program for
Law Enforcement*



DB Software Associates

GRIP Client Setup

Last Revised: December 27, 2006

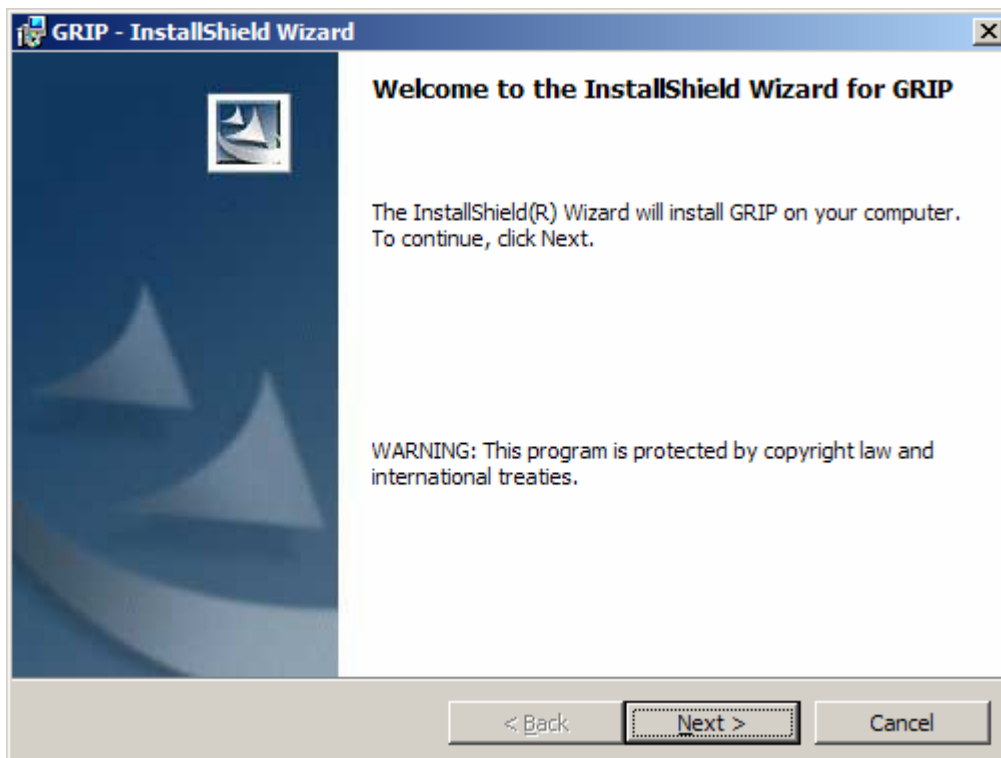
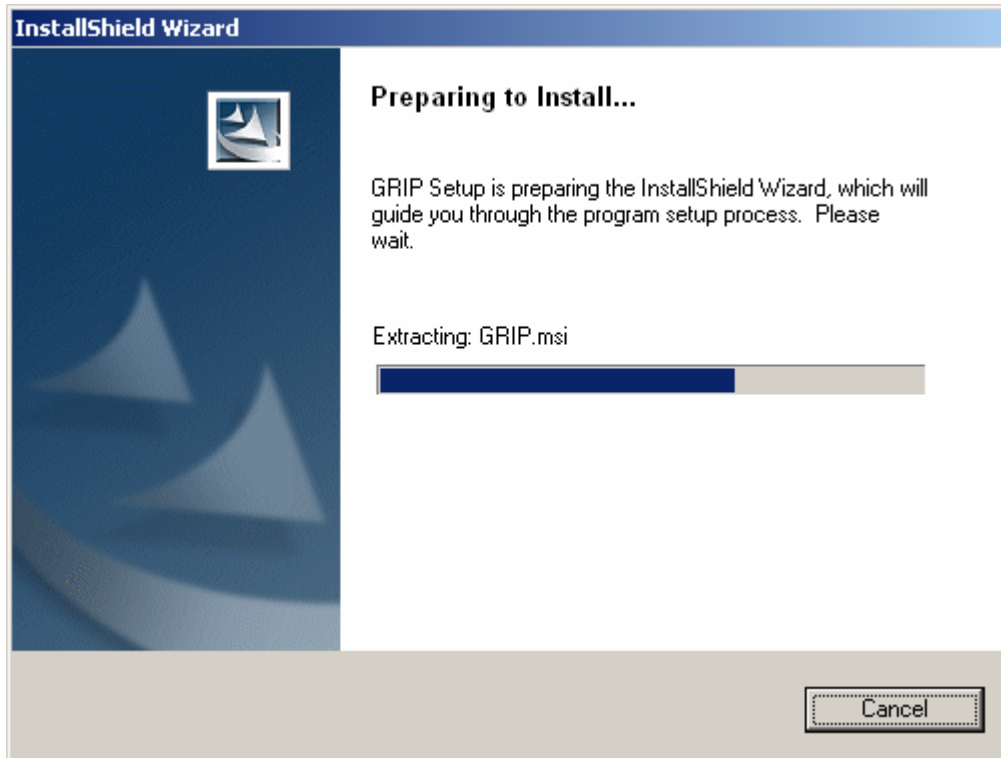
DB Software Associates, LLC
555 Tammany Pointe
Alpharetta, GA 30004
678-524-8108 (cellular)
770-663-8754 (office)

Table of Contents

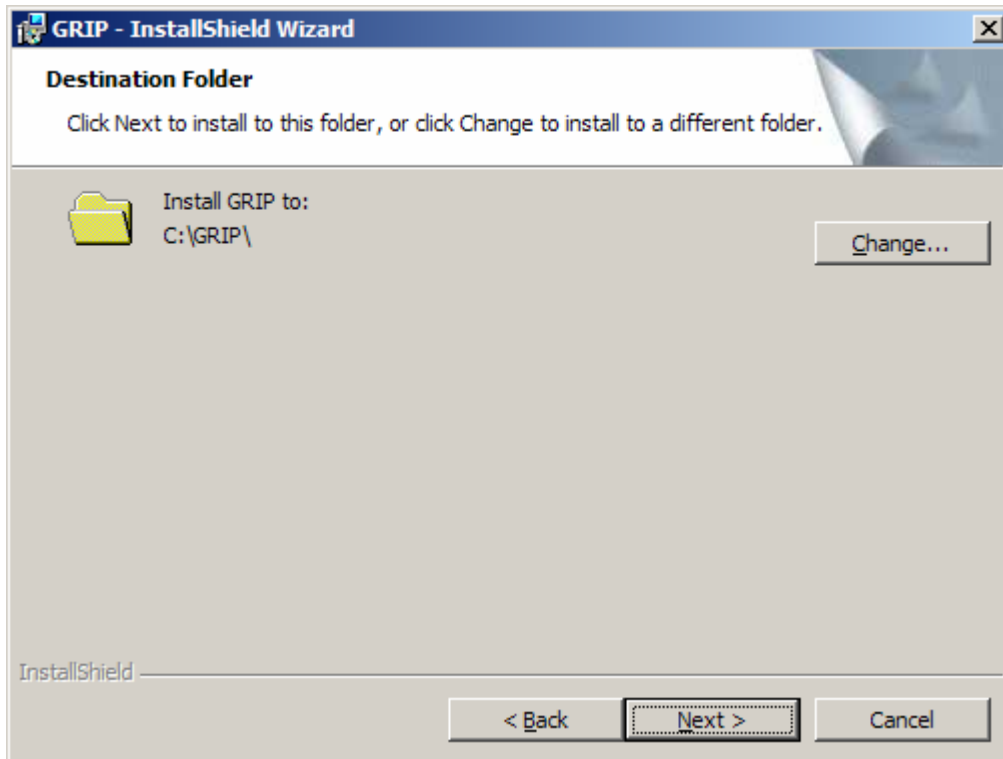
Table of Contents	2
Client Setup.....	3
Install GRIP on a New Computer	6
Update GRIP on an Existing Computer.....	10
Final Installation	12
SQL Server ODBC Driver SQL Server Name Update.....	13
ODBC DRIVER Setup	19
SQL Server ODBC Driver Setup.....	19
SQL Anywhere ODBC Driver Setup.....	26

Client Setup

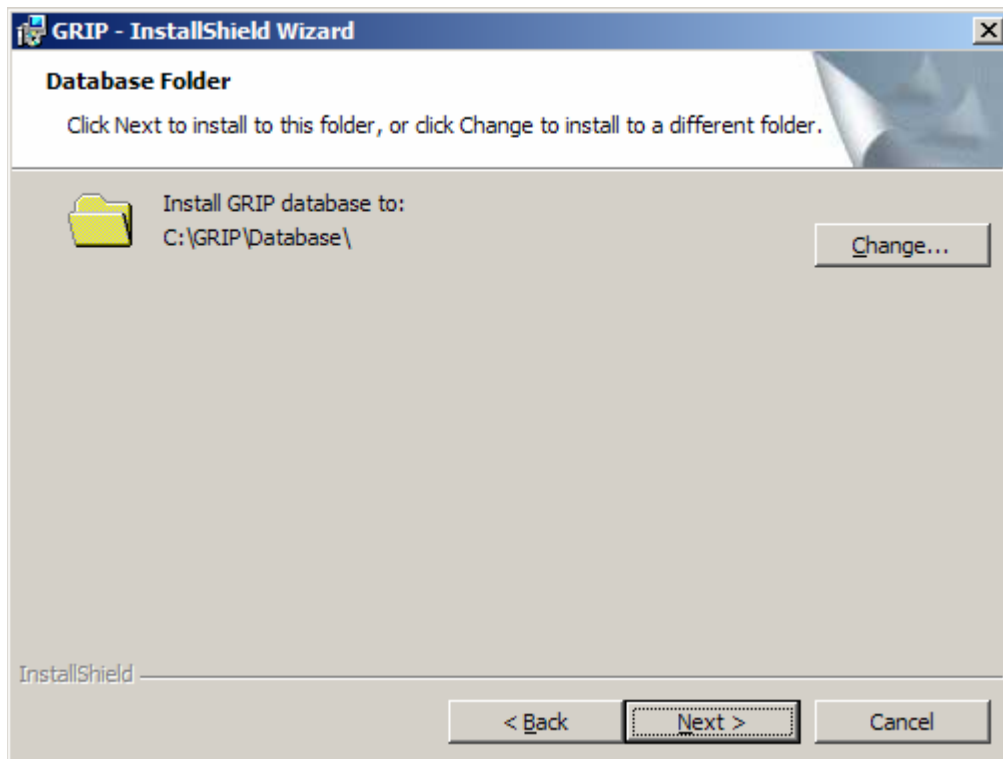
On the Client Machine, run the setup.exe installation program for GRIP. You must have **ADMINISTRATIVE** privileges in order to install the application.



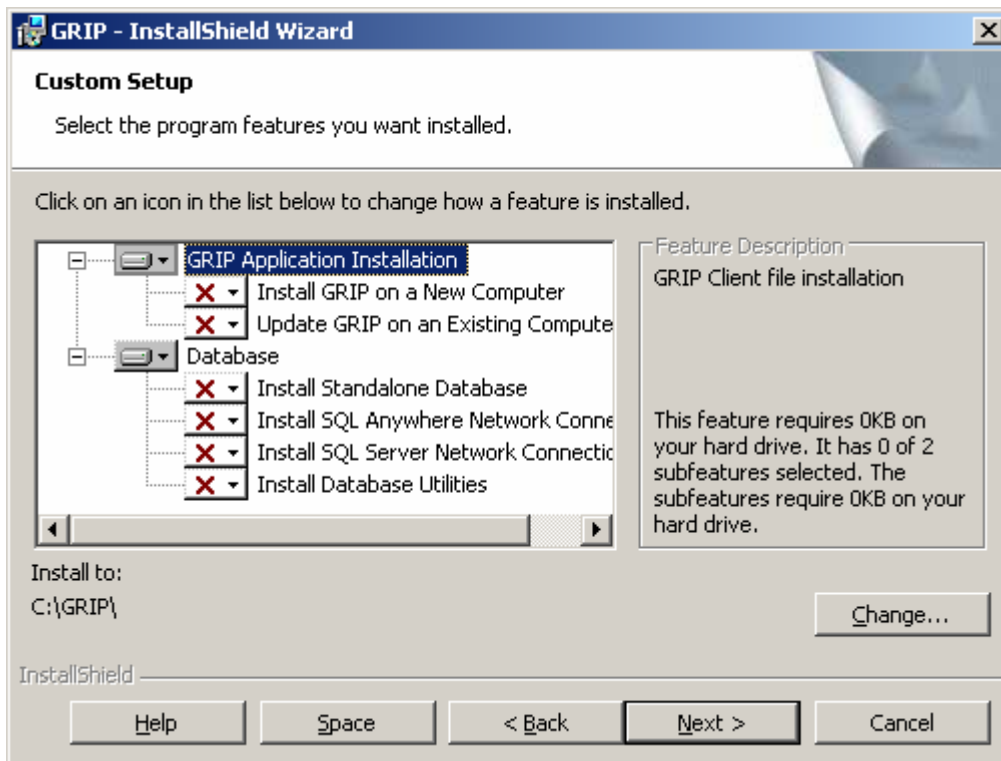
Click the **Next** button.



Click the **Next** button.



Click the **Next** button.



The GRIP installation consists of two components:

1. GRIP Application Installation

- **Install GRIP on a New Computer** - This item will install the GRIP application on a computer where the application has NOT previously been installed.
- **Update GRIP on an Existing Computer** - Select this option to update GRIP application files on a computer where the application HAS previously been installed.

2. Database (Database driver installation)

- **Install Standalone Database** - Select this option if you are running GRIP in stand-alone mode. Only choose this option during initial database installation.
- **Install SQL Anywhere Network Connection** - Select this option if this computer is not the database server. (You will connect to another computer running the GRIP database.)
- **Install SQL Server Network Connection** - Select this option if this computer is not the database server. (You will connect to another computer running the GRIP database.)
- **Install Database Utilities** (installs database maintenance utilities)


IMPORTANT NOTE:

When you are running the GRIP installer, you should always choose one of the following options (unless you are going to **Install Database Utilities**):

1. **Install GRIP on a New Computer** or
2. **Update GRIP on an Existing Computer**

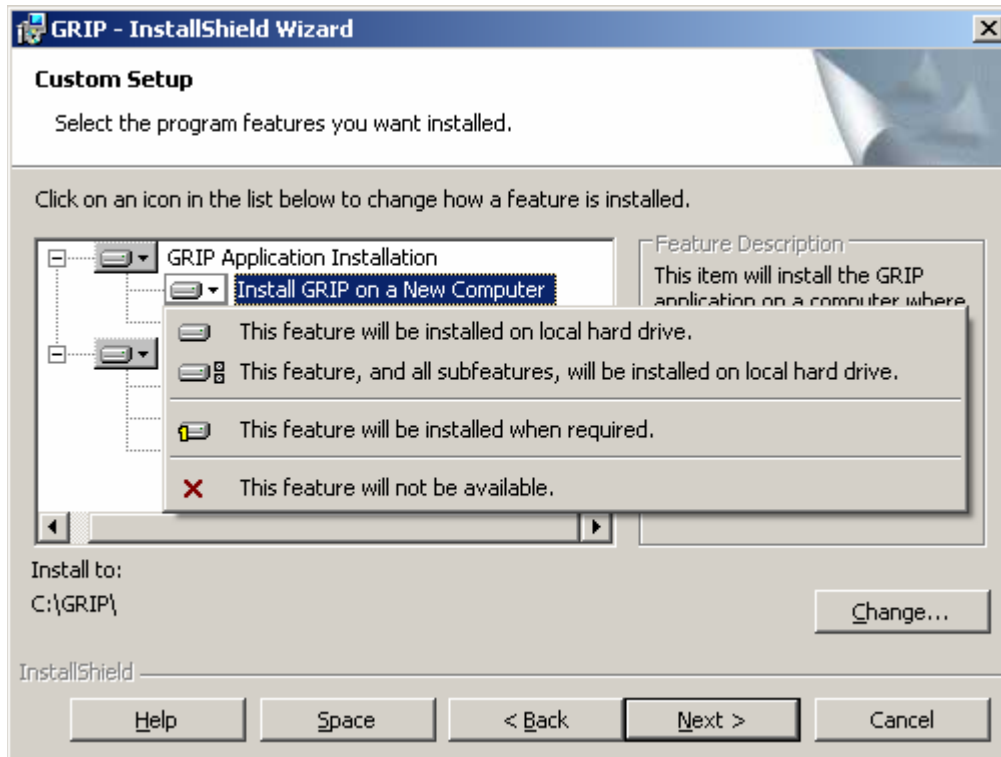
When you choose **Install GRIP on a New Computer**, you should additionally choose one of the following:

1. **Install Standalone Database** or
2. **Install SQL Anywhere Network Connection** or
3. **Install SQL Server Network Connection**

To install a component, click on the  button and choose **This feature will be installed on local hard drive**. (See below picture)

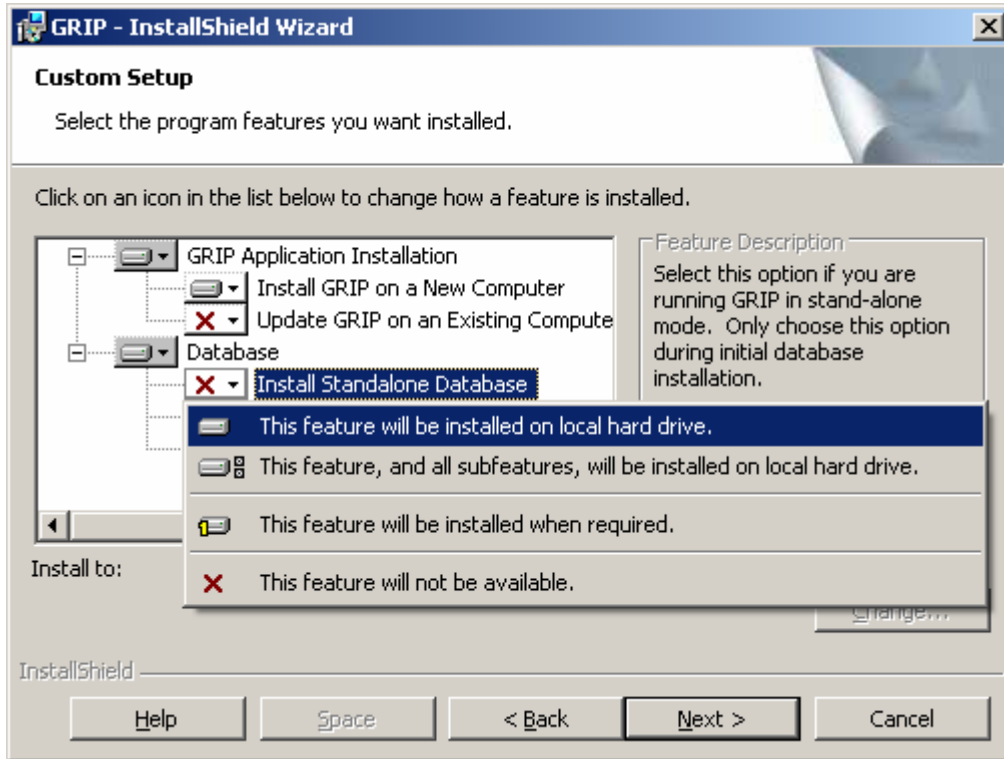
Install GRIP on a New Computer

If you are installing GRIP on a new computer (a computer where GRIP has never been installed before), select **This feature will be installed on local hard drive** from the **Install GRIP on a New Computer**. (see below)

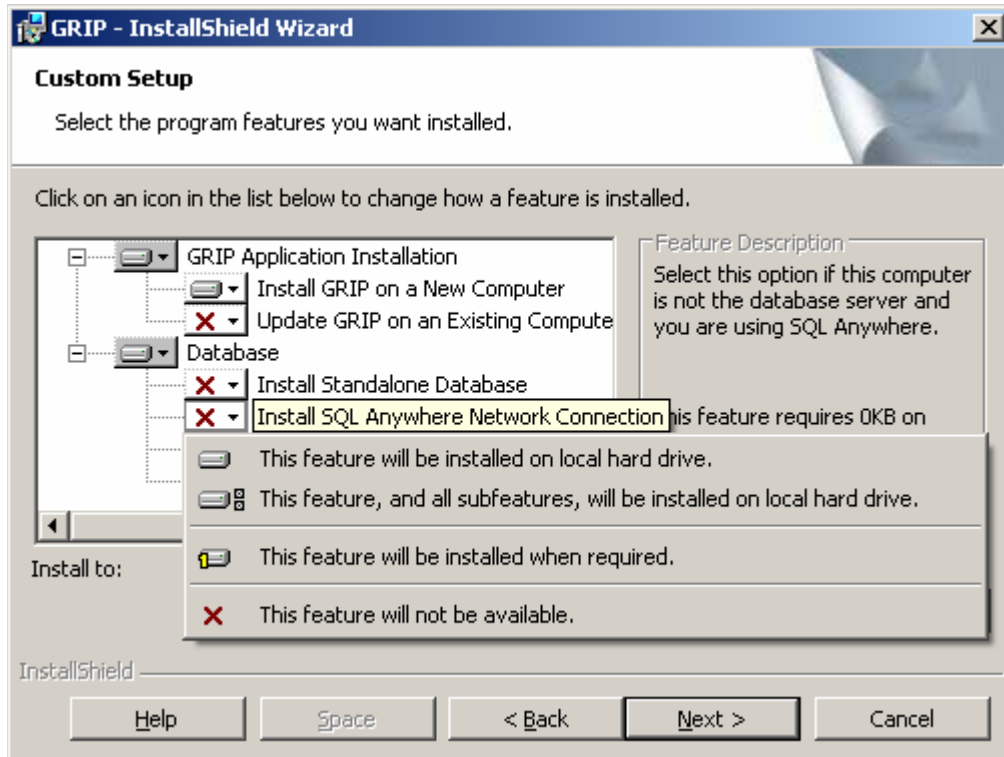


In addition to the above, you will need to choose

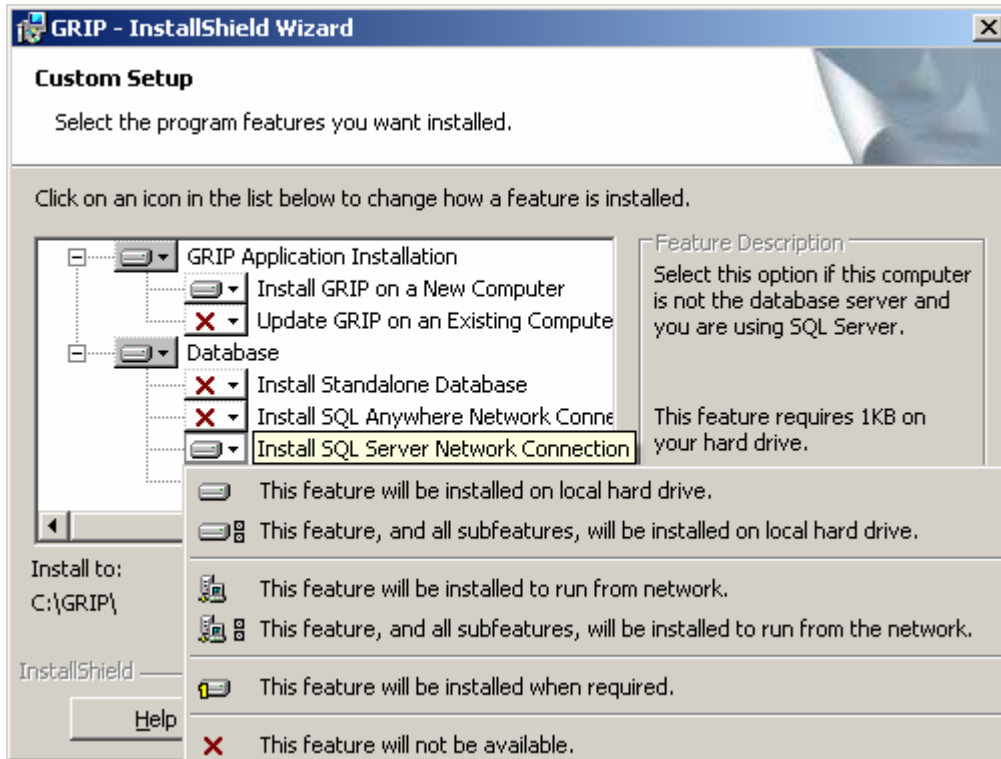
1. Install Standalone Database or
2. Install SQL Anywhere Network Connection
3. Install SQL Server Network Connection



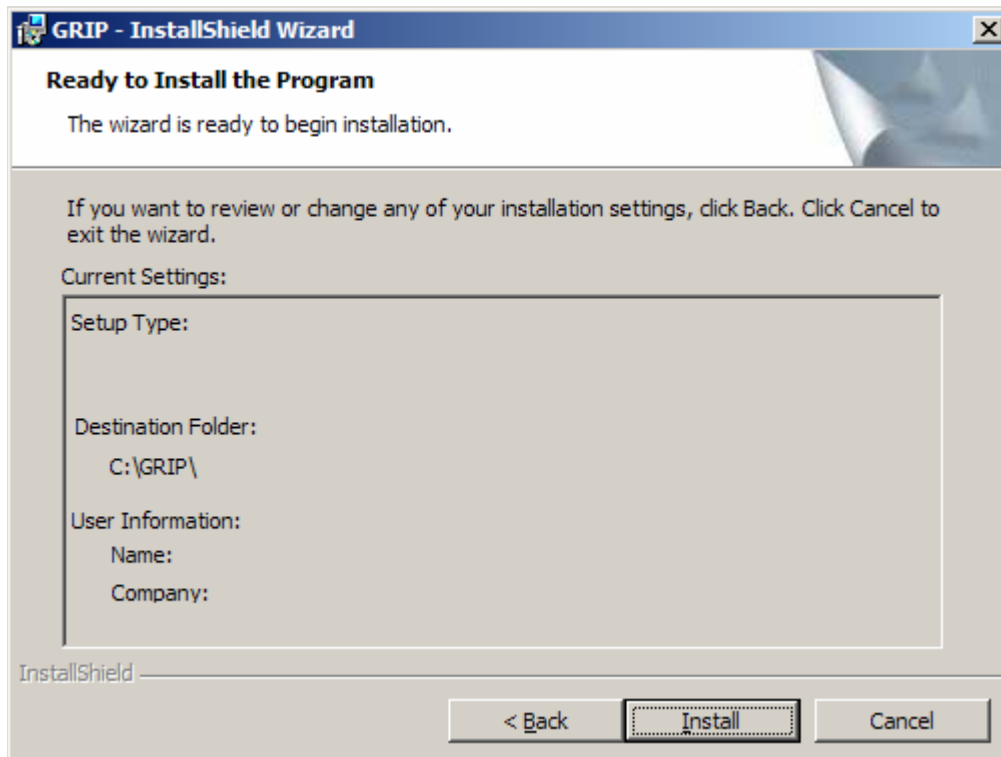
Or



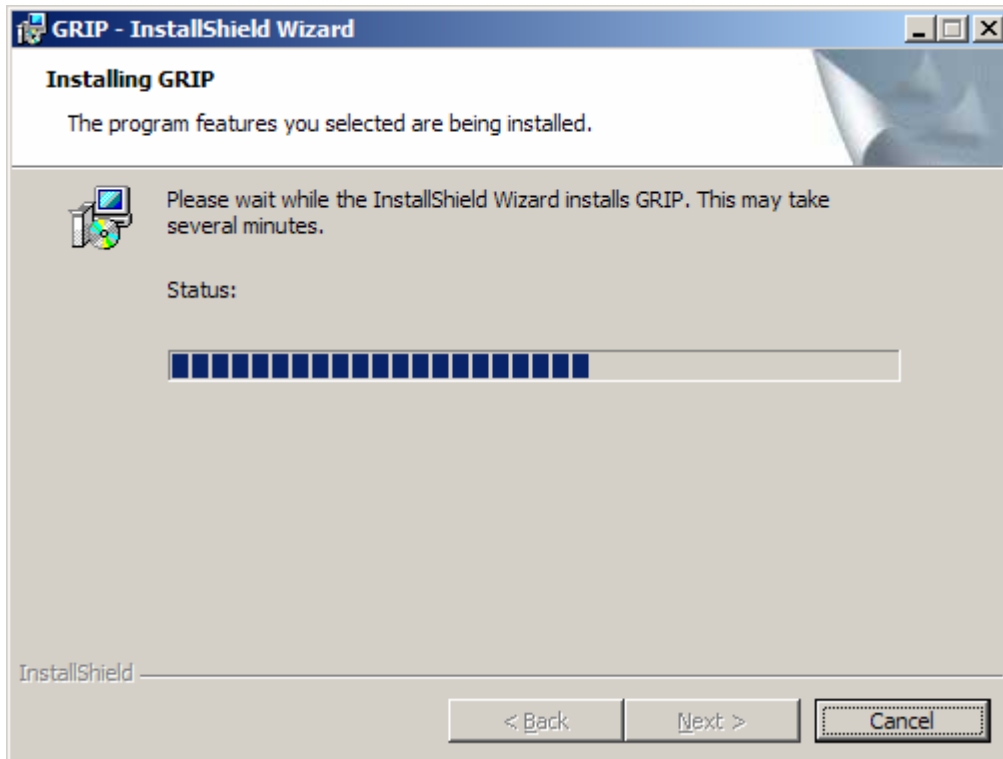
Or



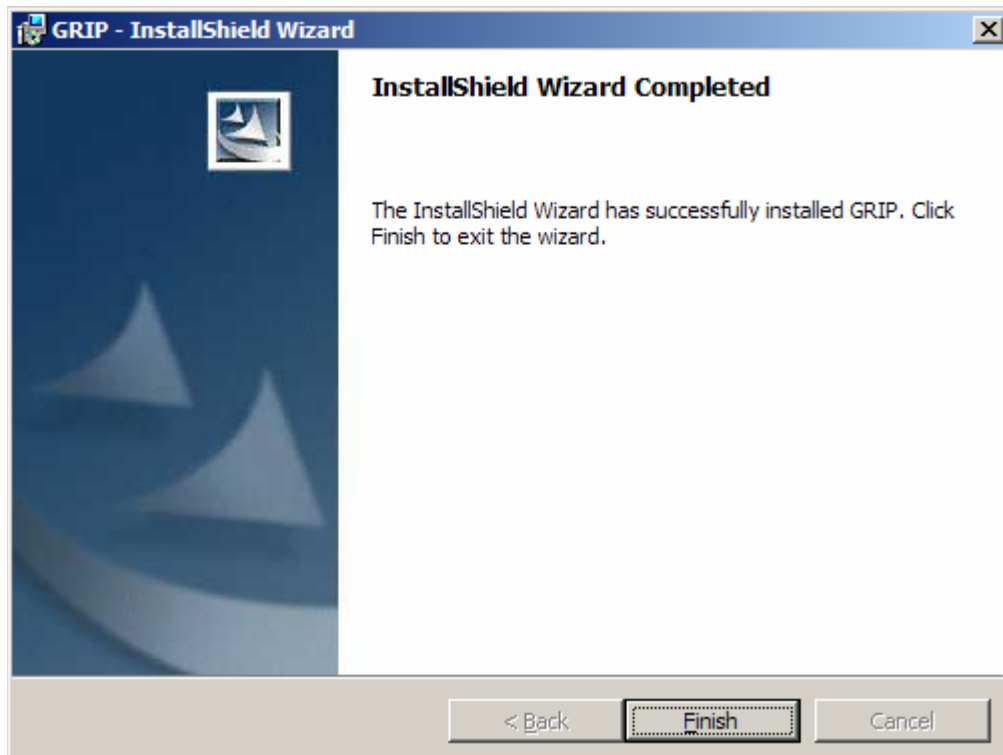
Once you have made the appropriate selections, Click the **Next** button.



Click the **Install** button.



Wait...



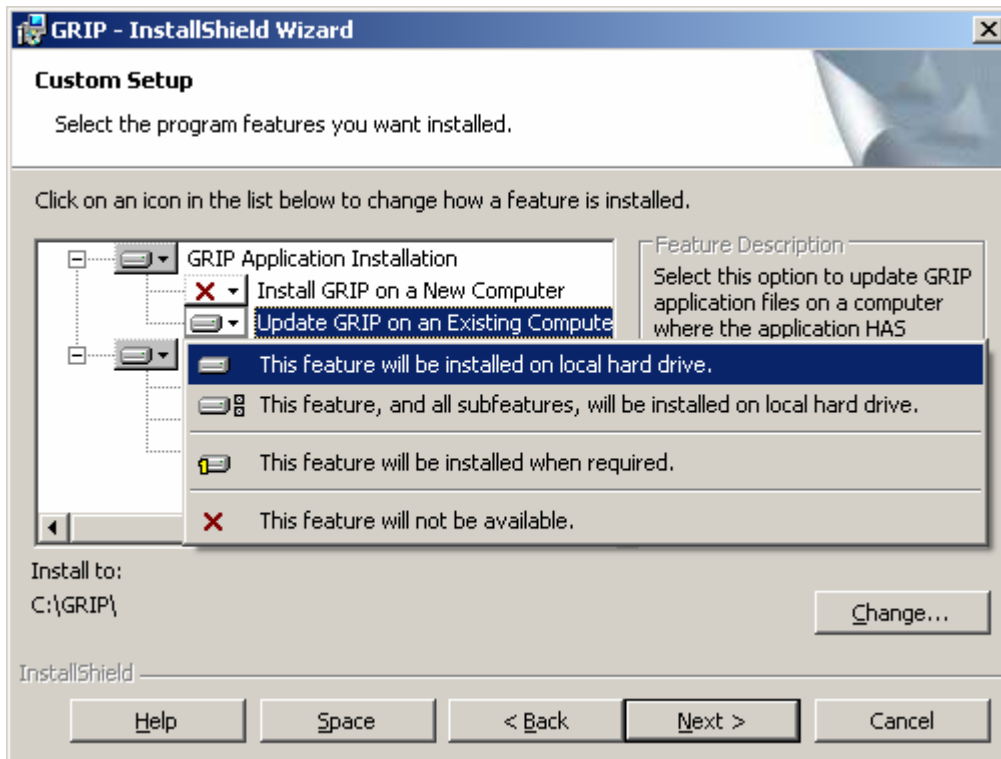
Click the **Finish** button.

IMPORTANT NOTE:

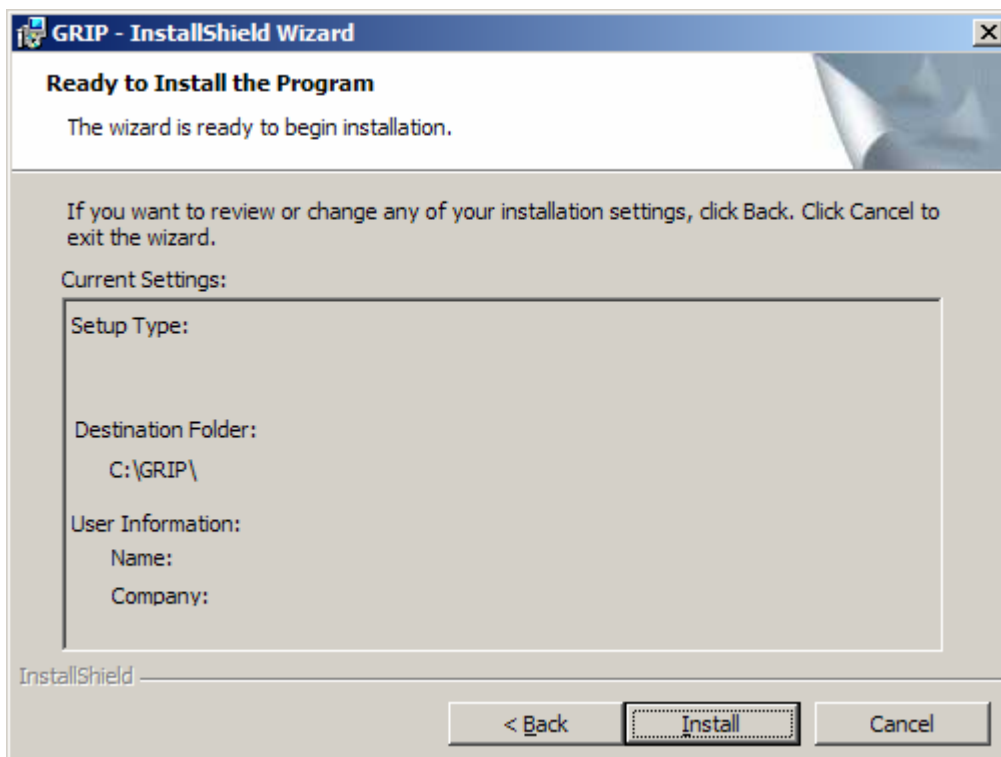
If you chose **Install SQL Server Network Connection**, see the section **titled SQL Server ODBC Driver SQL Server Name Update**

Update GRIP on an Existing Computer

If you are installing an update to GRIP (GRIP is already installed and you are installing a newer version), select **This feature will be installed on local hard drive** from the **Update GRIP on an Existing Computer**. (See below)



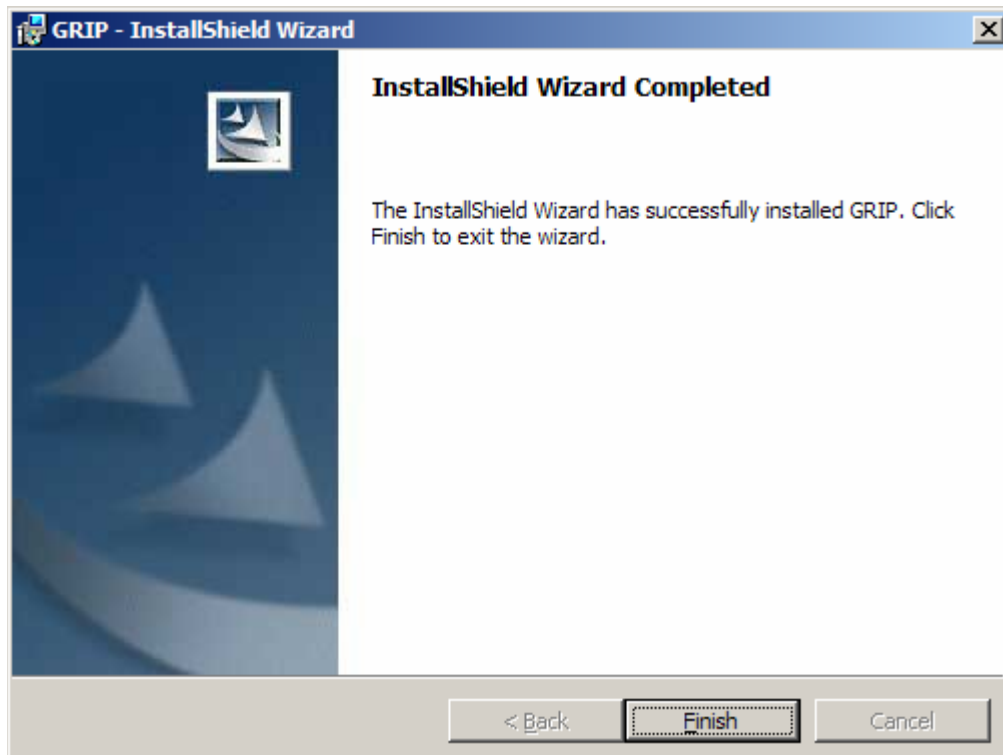
Once you have made the appropriate selections, Click the **Next** button.



Click the **Install** button.



Wait...



Click the **Finish** button.

Final Installation

Once GRIP has finished installing, you will have GRIP for Windows and GRIP User Training Manual shortcuts on your desktop.



**GRIP for
Windows**



**GRIP User
Traing Manual**

SQL Server ODBC Driver SQL Server Name Update

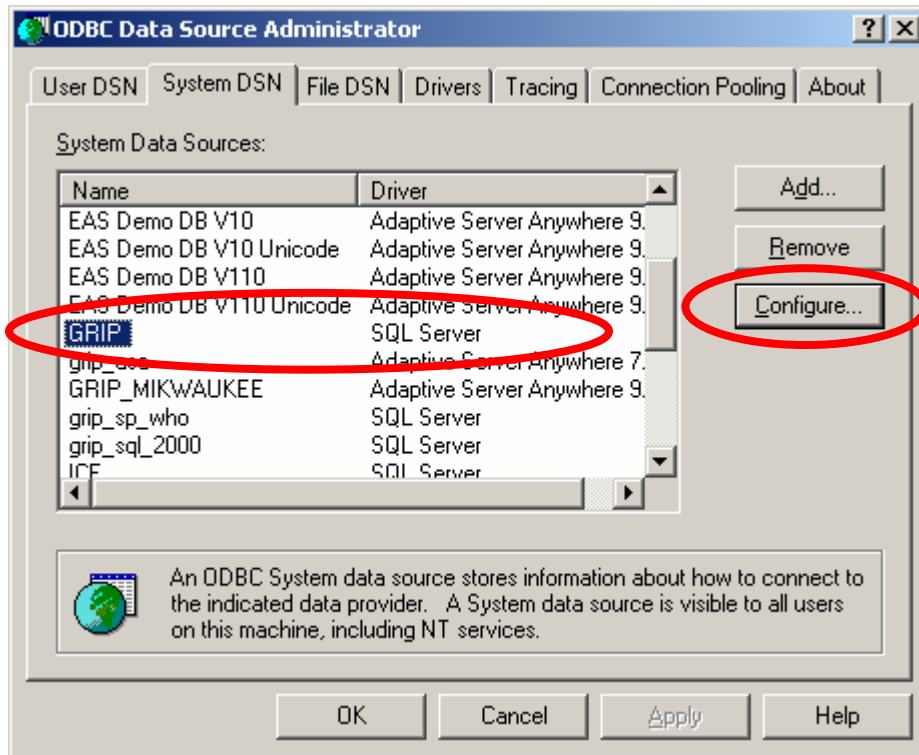
As part of the GRIP installation routine for SQL Server, the install program created a System DSN ODBC entry for GRIP. The server name of default installation will be set to local. This value must be changed to reflect the name of the actual SQL Server instance,

The ODBC manager can be started by going to:

- Start > Control Panel > Administrative Tools > Data Sources (ODBC)
- Start > Settings > Control Panel > ODBC Data Sources (32 bit)
- Start > Run > odbcad32.exe

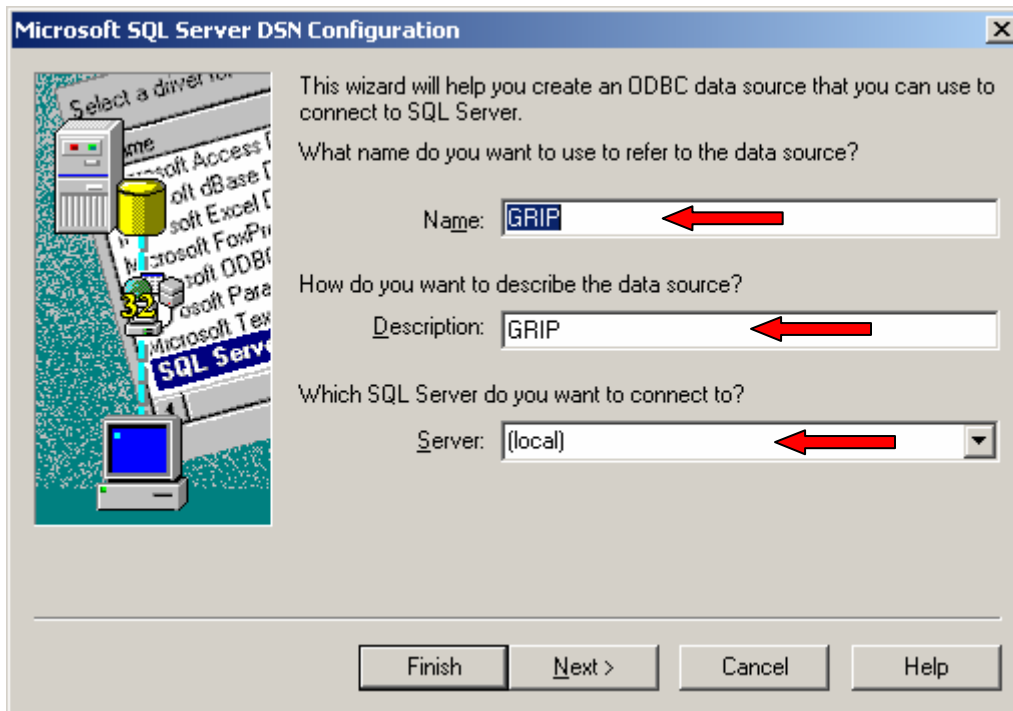
Start the ODBC Data Source Administrator

Select the **System DSN** Tabpage.



Highlight the GRIP data source and click on the **Configure** button.

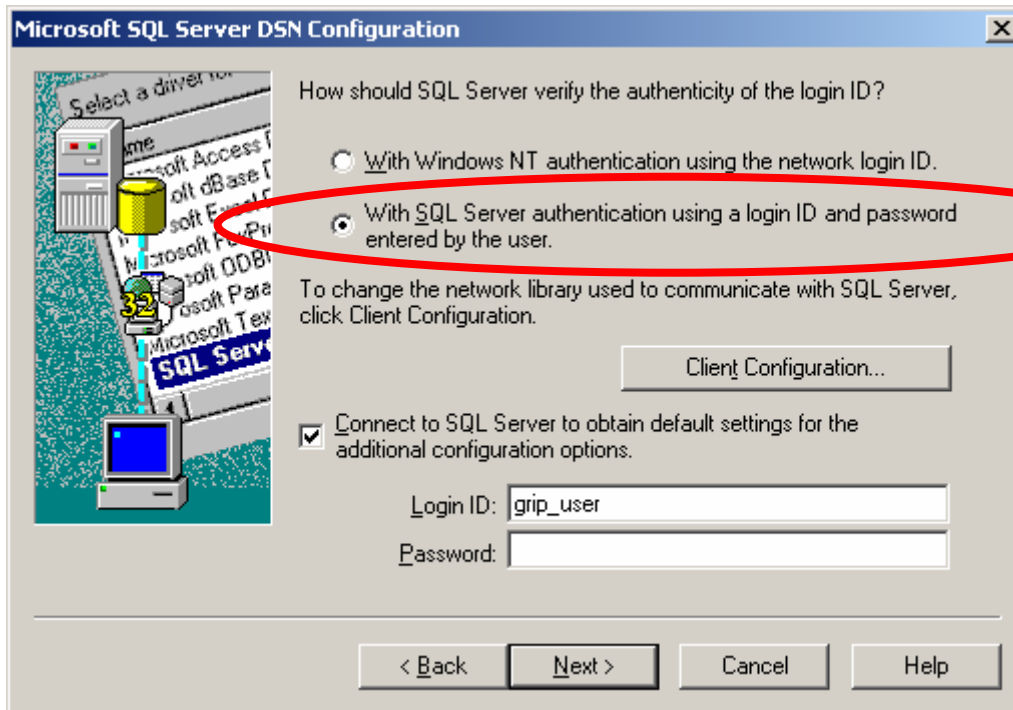
The following window will open:



You must change the Server name to reflect the name of the SQL Server you want to connect to. Either type the name of the server or click on the dropdown arrow and select the name of the server.

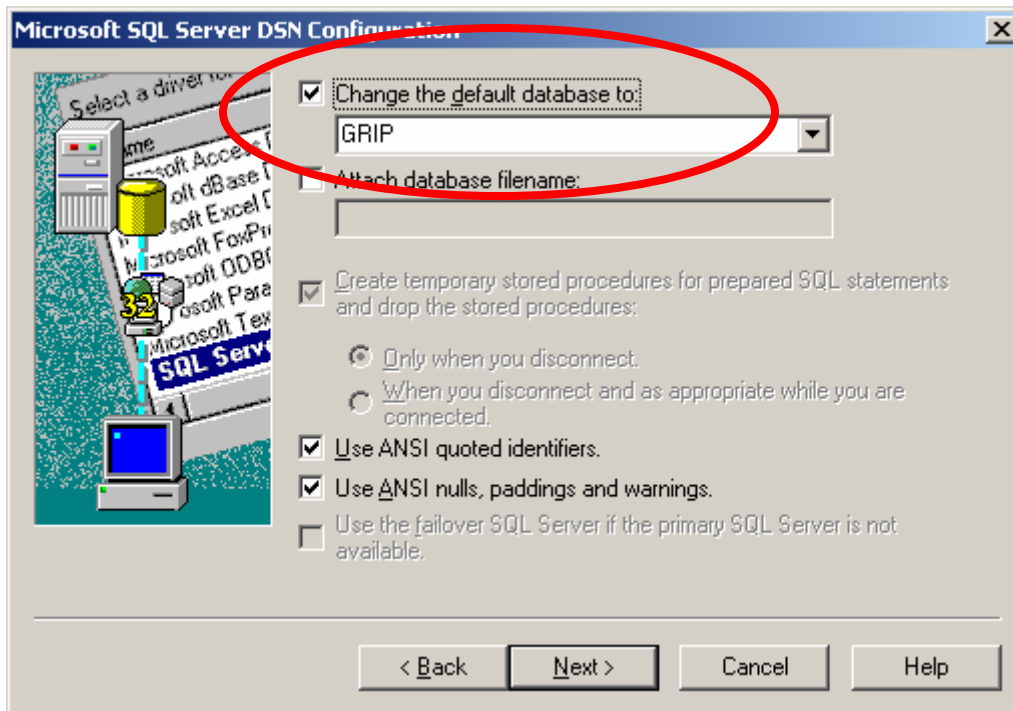
To verify the ODBC settings, review the following directions:

Click on the **Next** button.



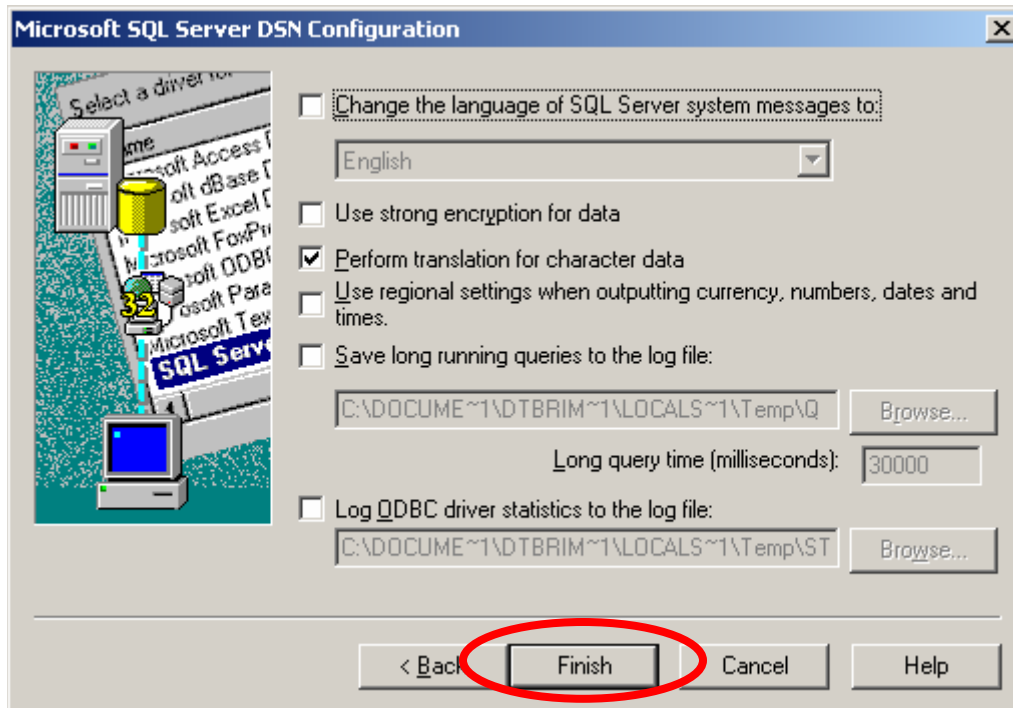
The GRIP ODBC connection uses SQL Server authentication to connect to the database.

Click on the **Next** button.



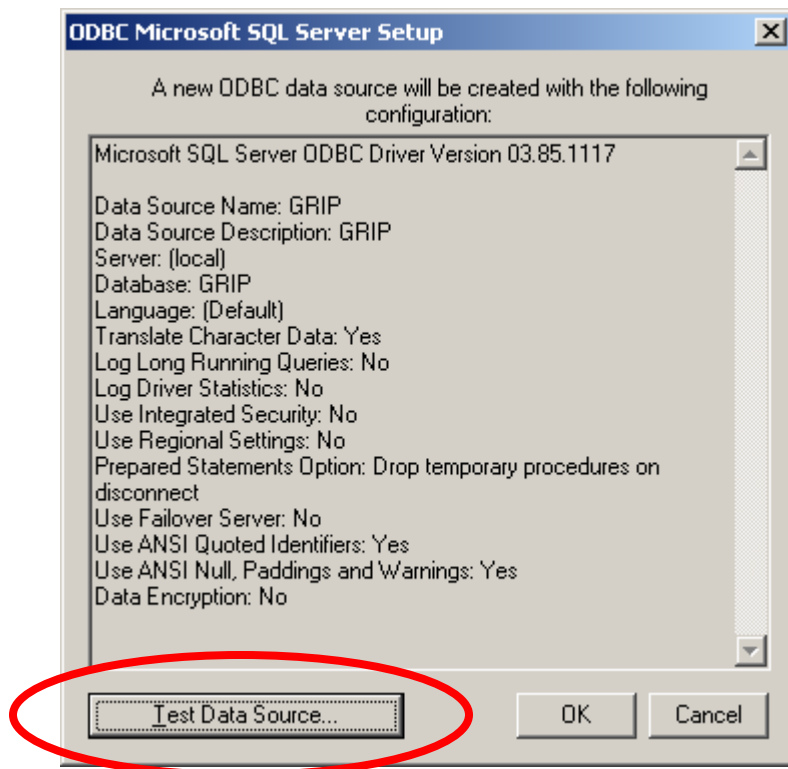
The default database must be set to GRIP.

Click the **Next** button.

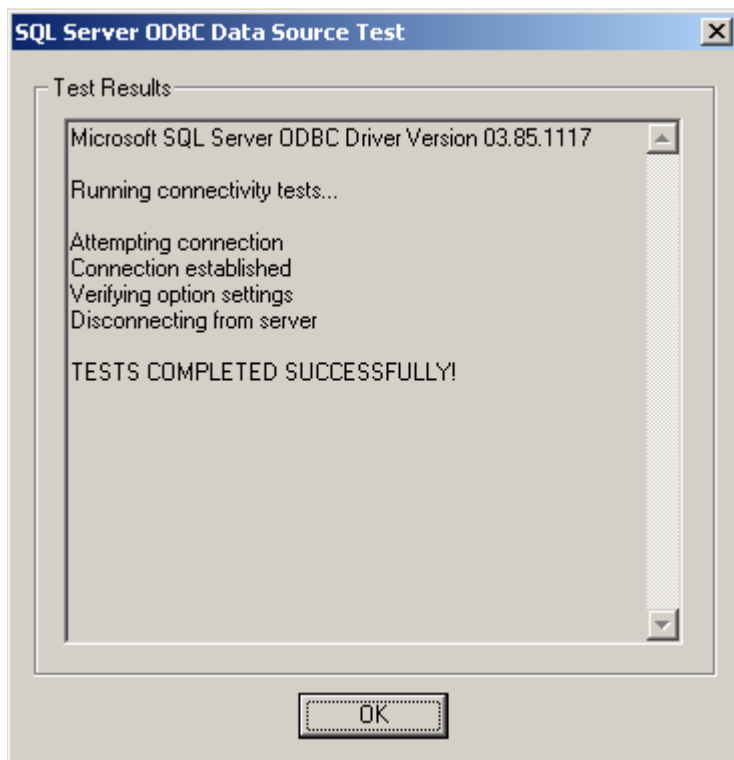


Click the **Finish** button.

To test the ODBC data source, click on the **Test Data Source** button.



If the connection is successful, you should get the following message.



ODBC DRIVER Setup

SQL Server ODBC Driver Setup

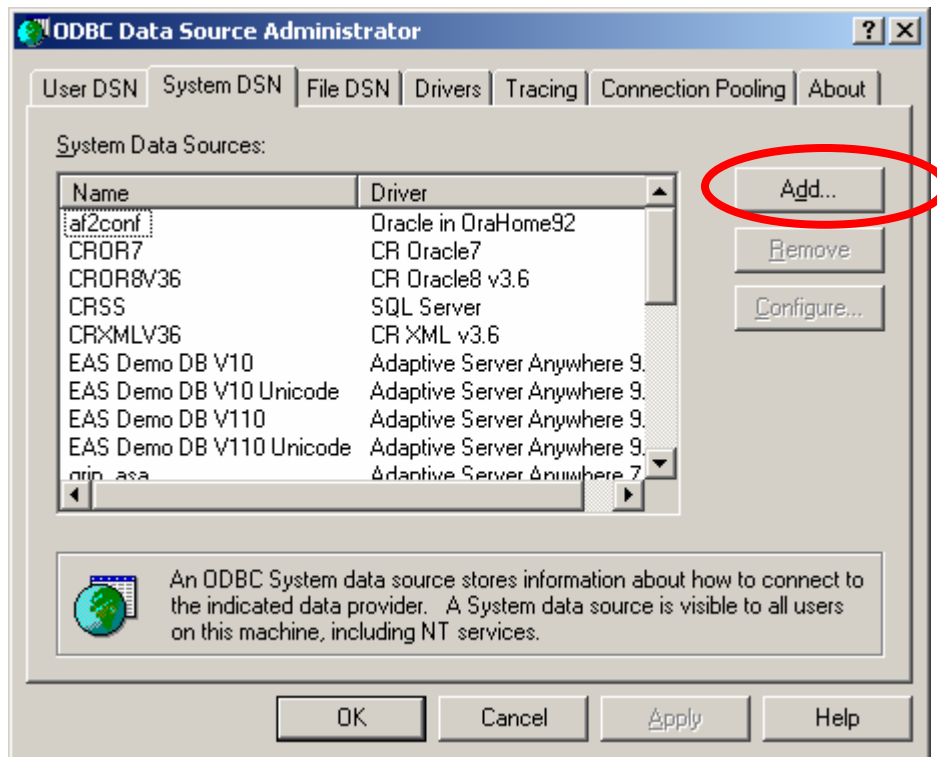
To create a new SQL Server ODBC DSN for GRIP, execute the following directions.

The ODBC manager can be started by going to:

- Start > Control Panel > Administrative Tools > Data Sources (ODBC)
- Start > Settings > Control Panel > ODBC Data Sources (32 bit)
- Start > Run > odbcad32.exe

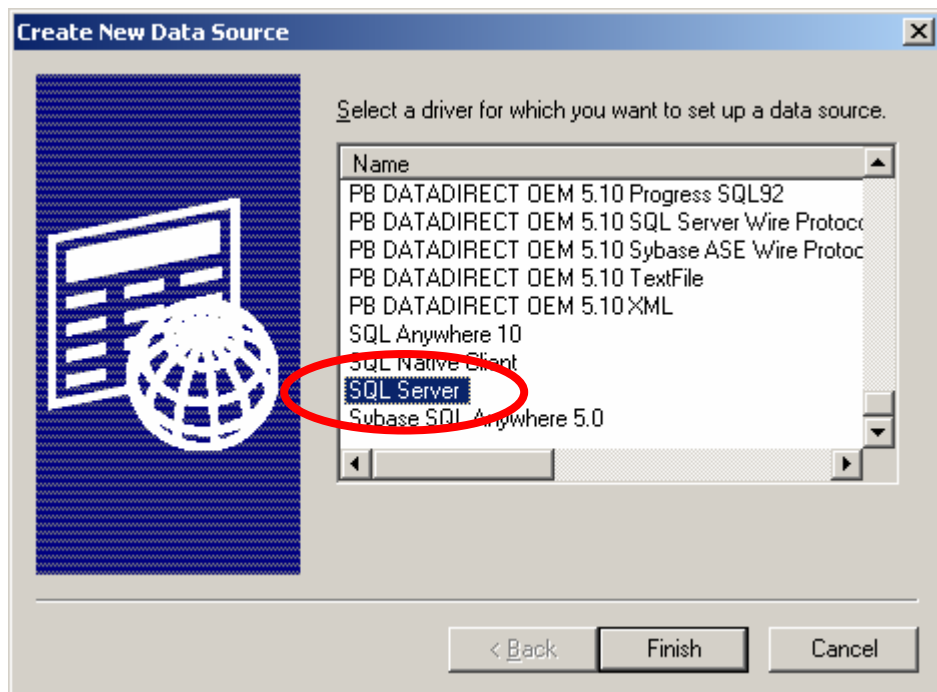
Start the ODBC Data Source Administrator

Select the **System DSN** Tabpage.



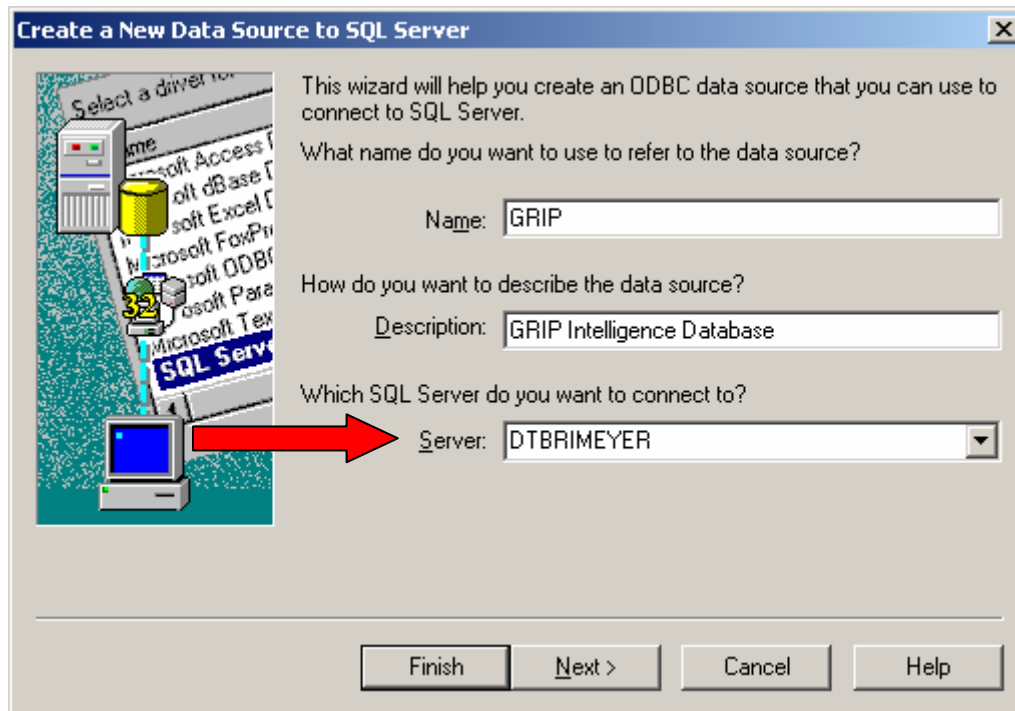
Click on the **Add** button to create a new DSN.

The following window will open:



Select **SQL Server** from the driver names and click **Finish**.

The following window will open:



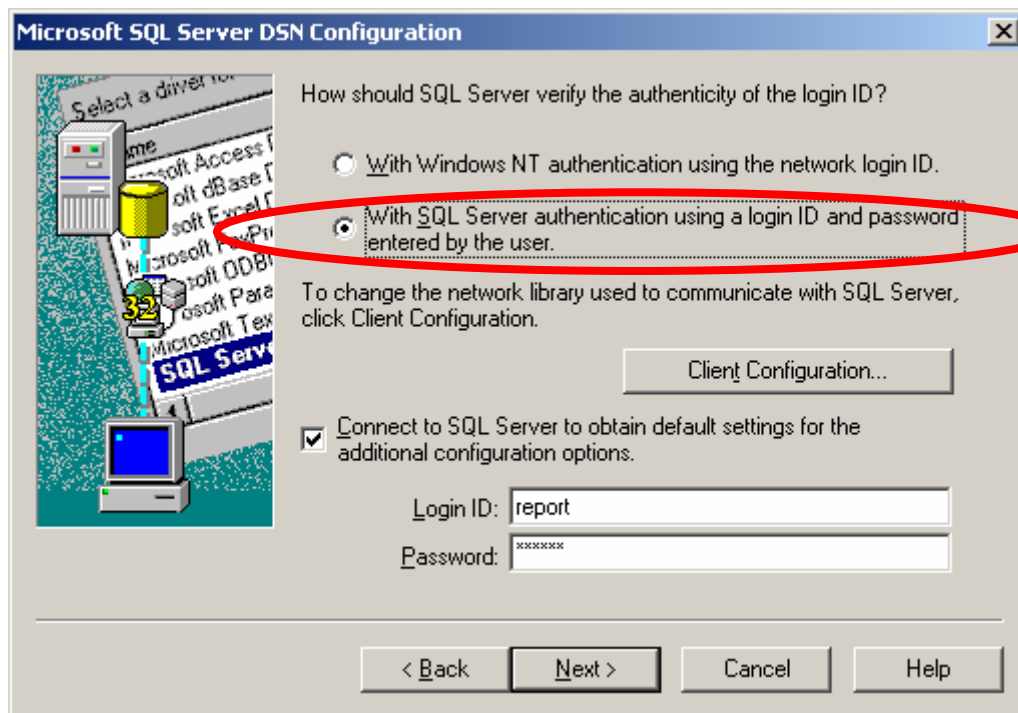
Enter the following parameters:

- Name: **GRIP**
- Description: **GRIP Intelligence Database**
- Server: **(your specific sql server name)**

You must change the Server name to reflect the name of the SQL Server you want to connect to. Either type the name of the server or click on the dropdown arrow and select the name of the server.

Click on the **Next** button

The following window will open:



Click on the Radio Button to select the following login option”

With SQL Server authentication using a login ID and password entered by the user.

GRIP has its own internal security. User ID and Passwords are defined inside the GRIP application. The GRIP application will connect to the database using a predefined user id.

IF YOU WISH TO TEST THE SETTINGS AND CONNECTION WHEN FINISHED, ENTER THE FOLLOWING:

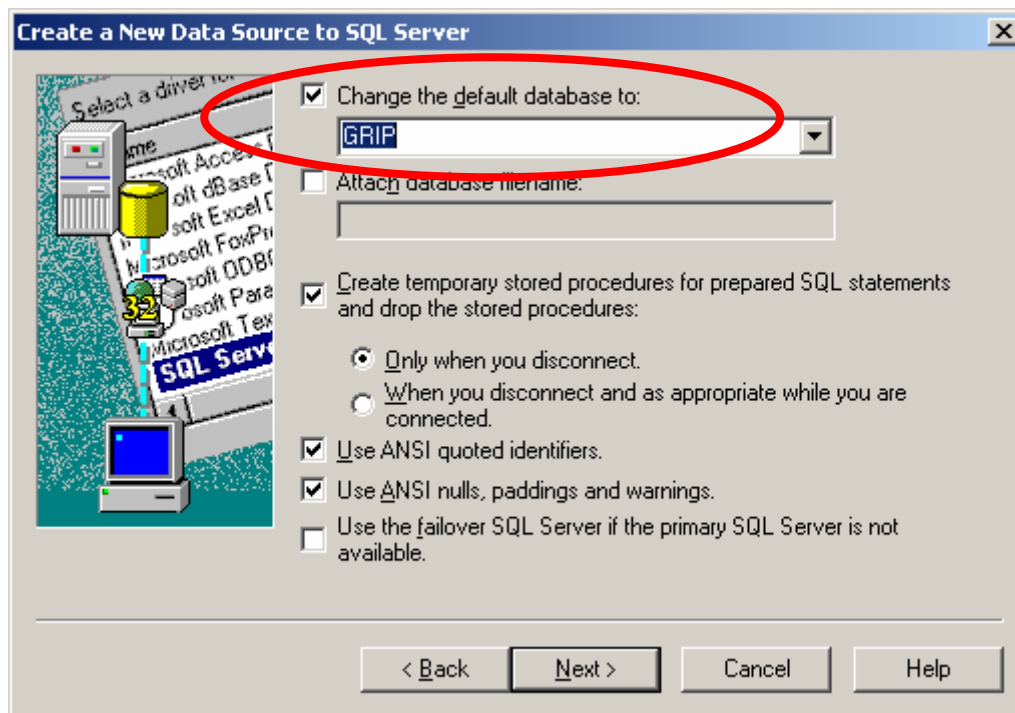
Login ID: report

Password: report

(This assumes that this user id had been created in the sql server database)

Click on the **Next** button

The following window will open:

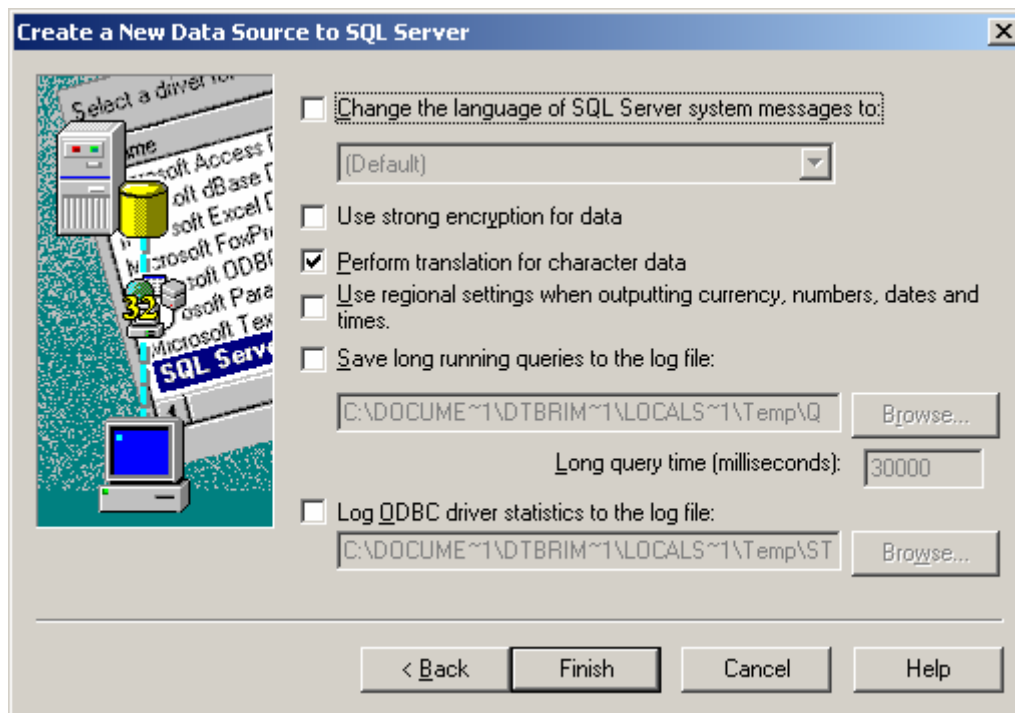


Click on the Change the default database to: check box. Enter **GRIP** as the database name.

\

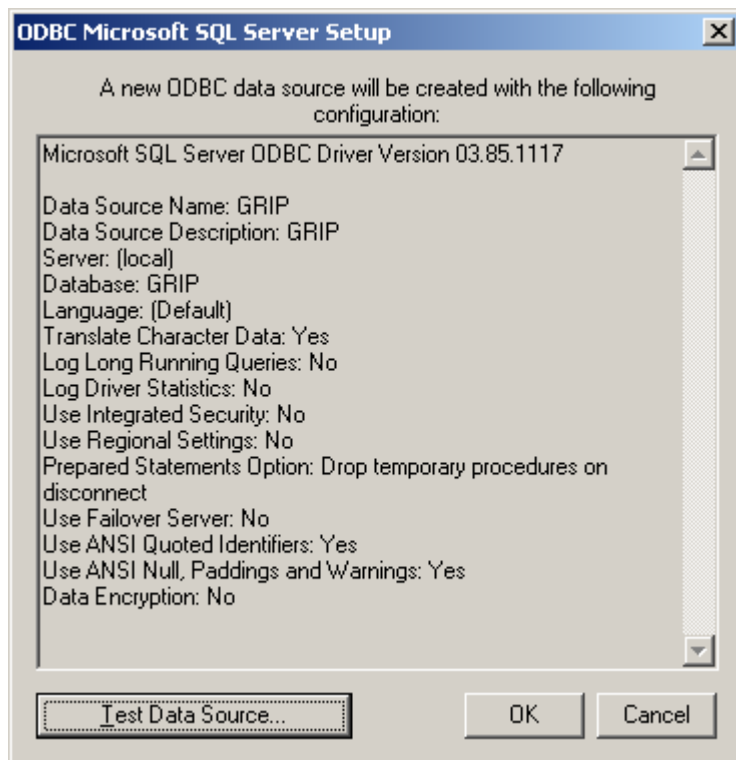
Click on the **Next** button

The following window will open:

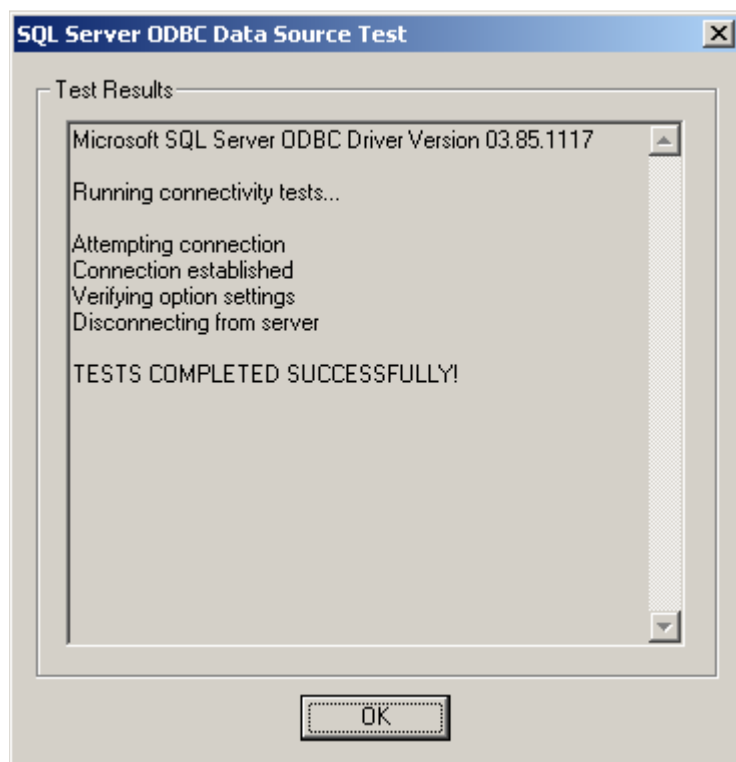


Click the **Finish** button.

To test the ODBC data source, click on the **Test Data Source** button.



If the connection is successful, you should get the following message.



SQL Anywhere ODBC Driver Setup

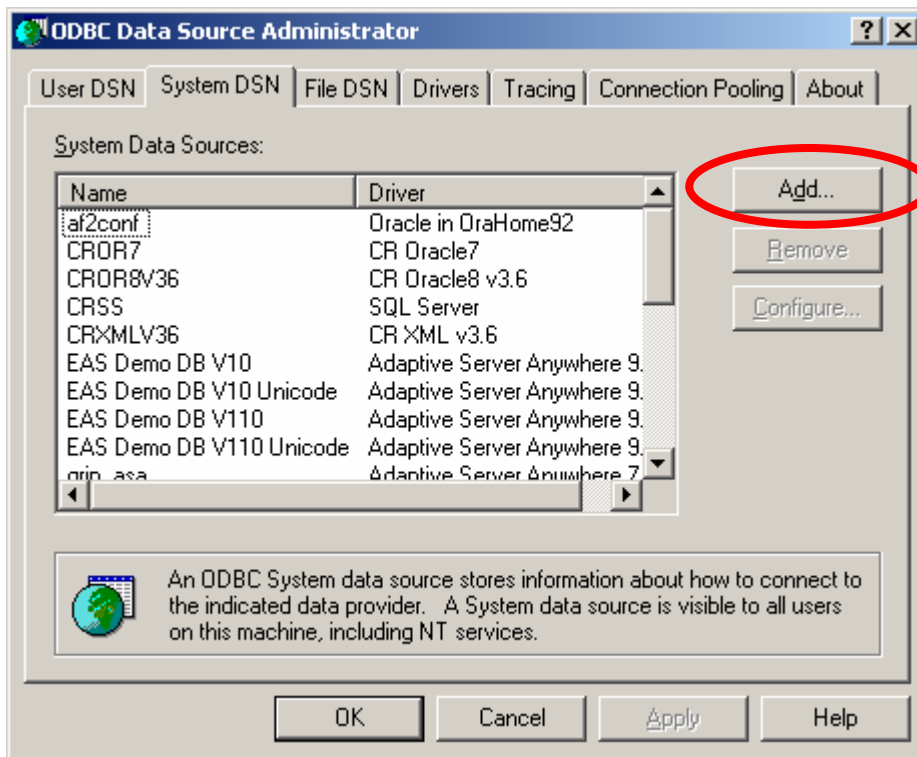
To create a new SQL Anywhere ODBC DSN for GRIP, execute the following directions.

The ODBC manager can be started by going to:

- Start > Control Panel > Administrative Tools > Data Sources (ODBC)
- Start > Settings > Control Panel > ODBC Data Sources (32 bit)
- Start > Run > odbcad32.exe

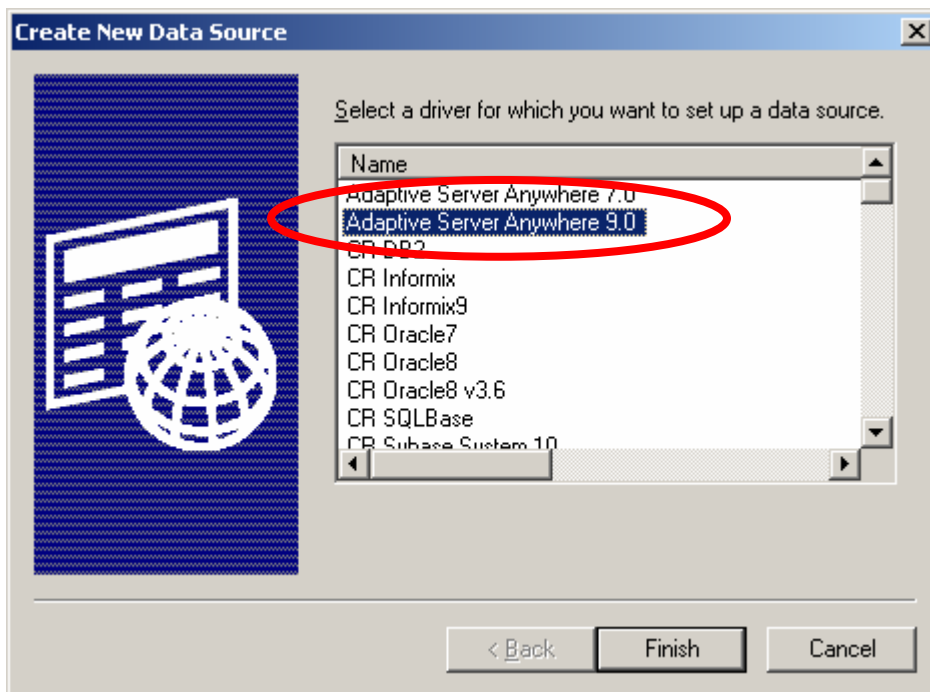
Start the ODBC Data Source Administrator

Select the **System DSN** Tabpage.



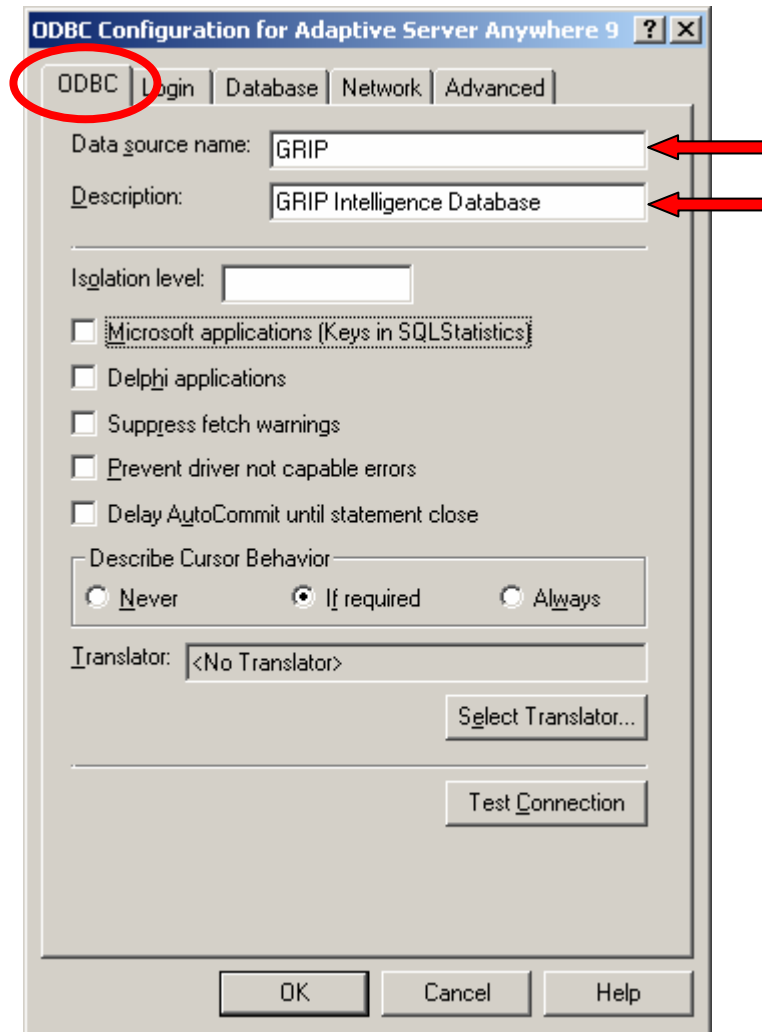
Click on the **Add** button to create a new DSN.

The following window will open:



Select **Adaptive Server Anywhere 9.0 (OR THE NAME OF THE DRIVER FOR THE VERSION YOU ARE USING)** from the driver names and click **Finish**.

The following window will open:

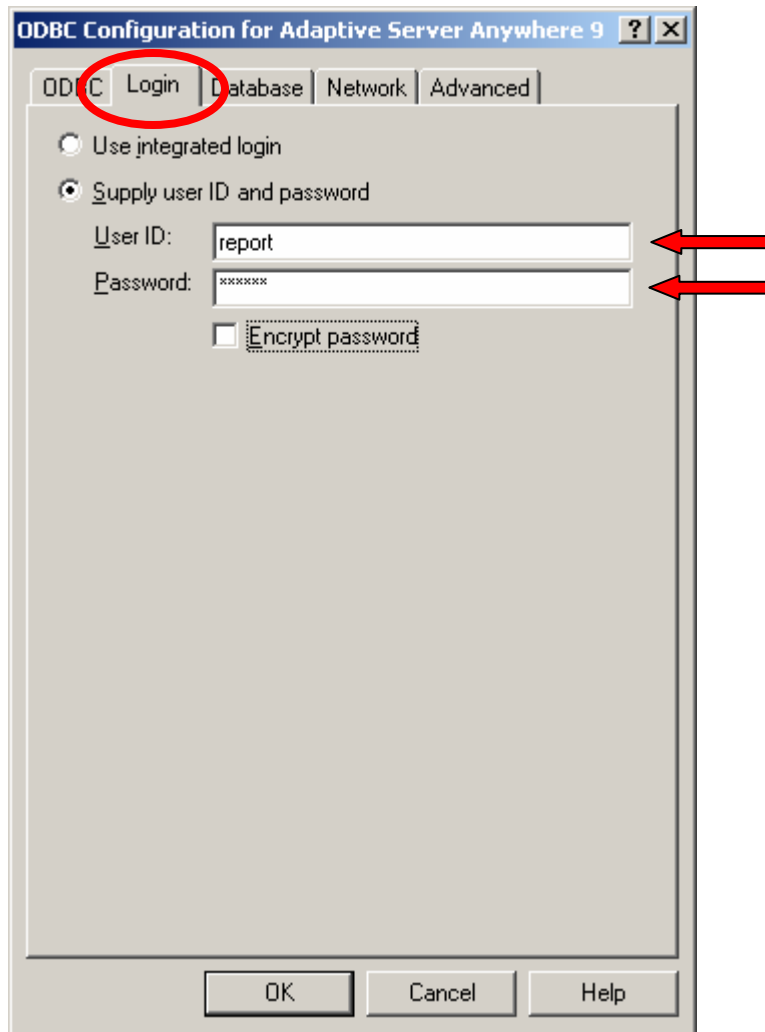


Enter the following parameters:

- Data Source Name: **GRIP**
- Description: **GRIP Intelligence Database**

Click on the Login tabpage.

The following tabpage will display:

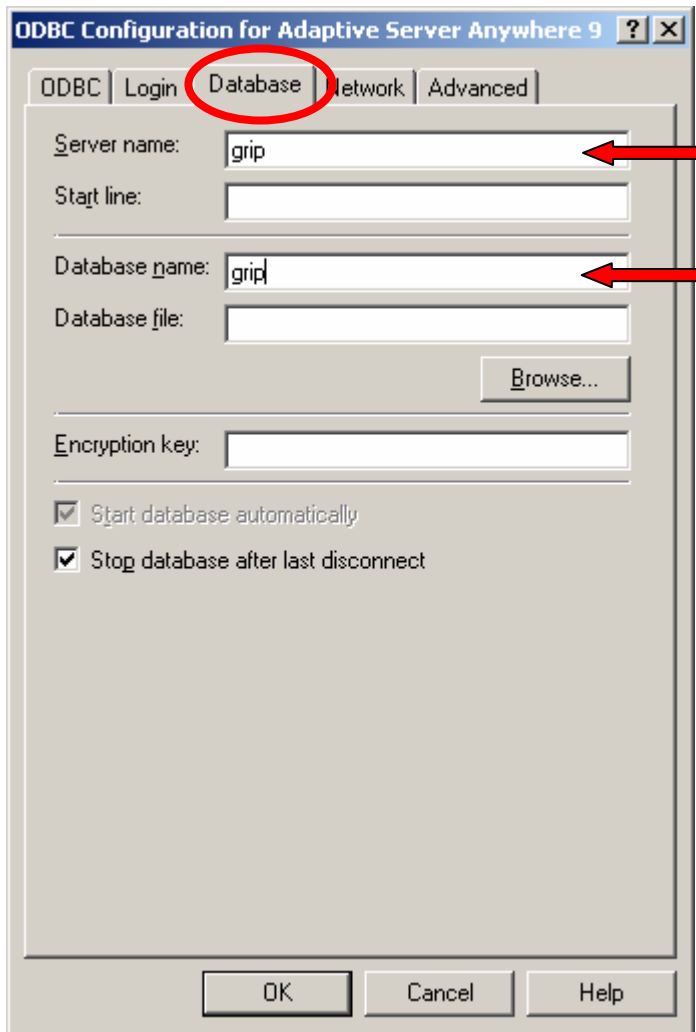


Enter the following parameters:

- User ID: **report**
- Password: **report**

Click on the Database tabpage.

The following tabpage will display:

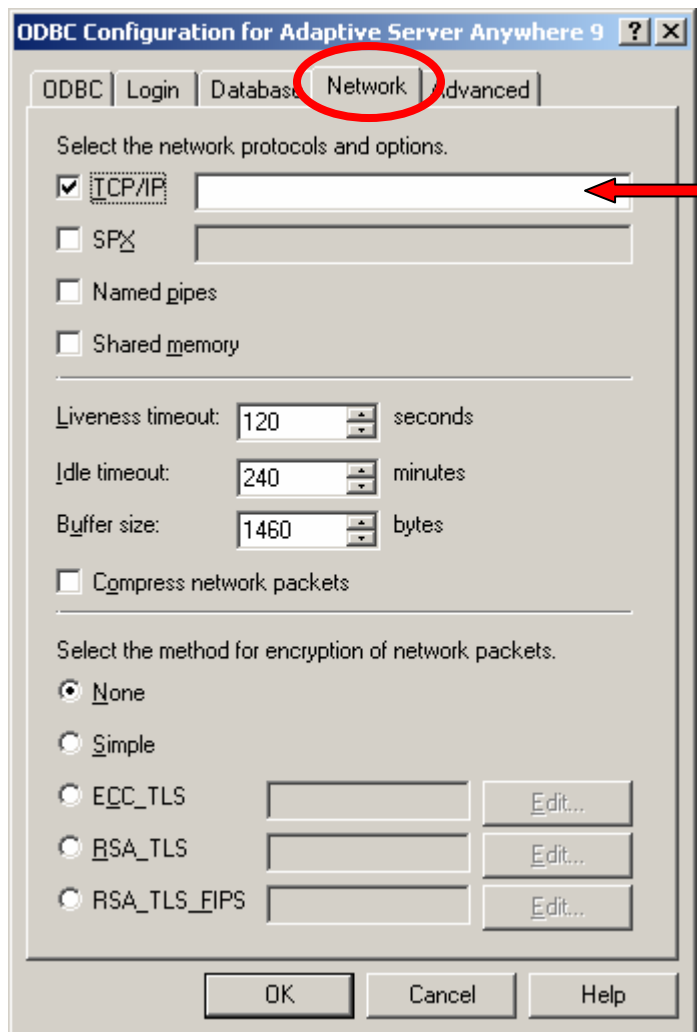


Enter the following parameters:

- Server Name **grip**
- Database Name: **grip**

Click on the Network tabpage.

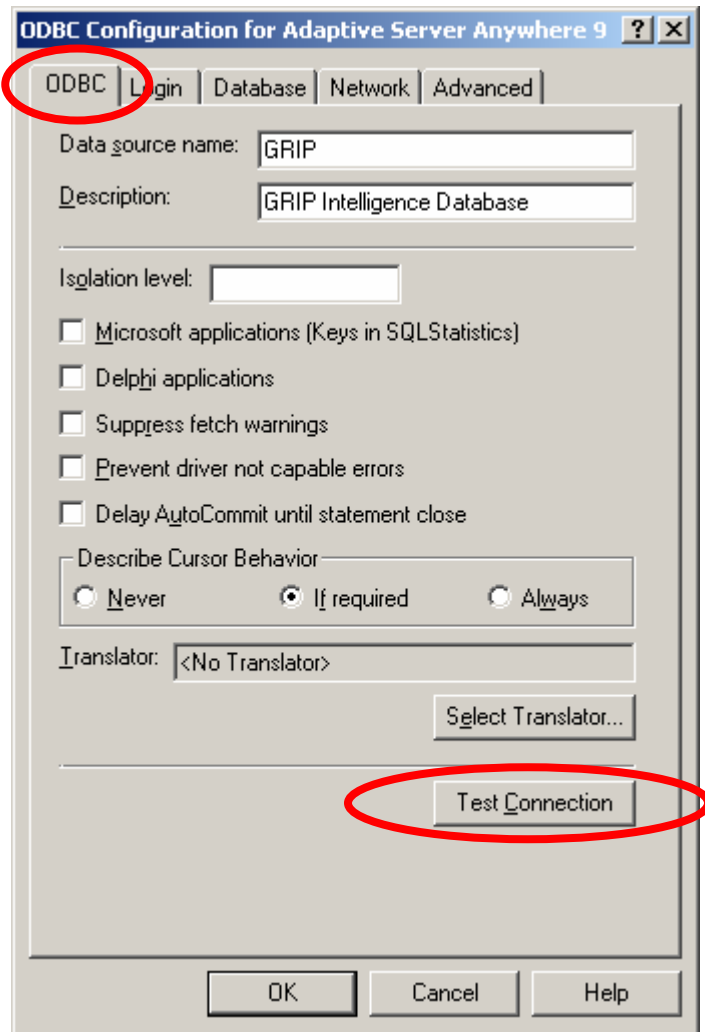
The following tabpage will display:



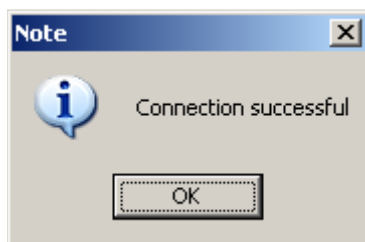
Select the following network protocols:

- TCP/IP

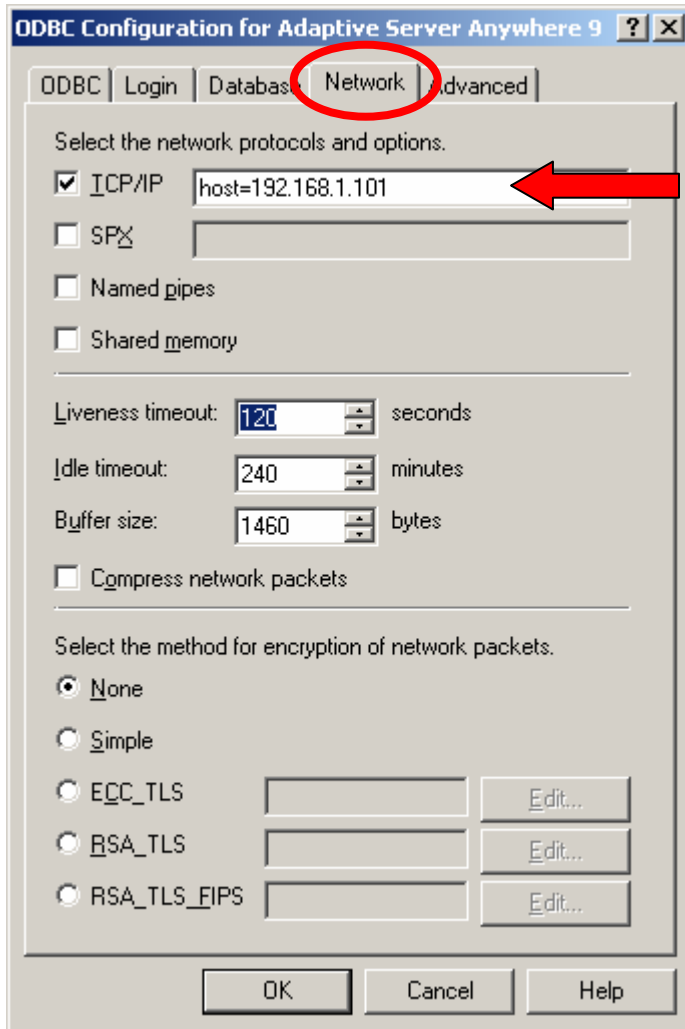
To test the ODBC data source, click on the **ODBC** tabpage.



If the connection was successful, the following message box will display.



If you are not able to connect to the server, go to the network tabpage:



In the TCP/IP box, enter either of the following:

Host=(**ip address of the database server**) or
Host=(**name of the server**)

See examples below:

HOST=ps_nt3
HOST=192.168.1.101